


# PROPOSED

APPROVED:



January 8, 2024

David Lassner  
President

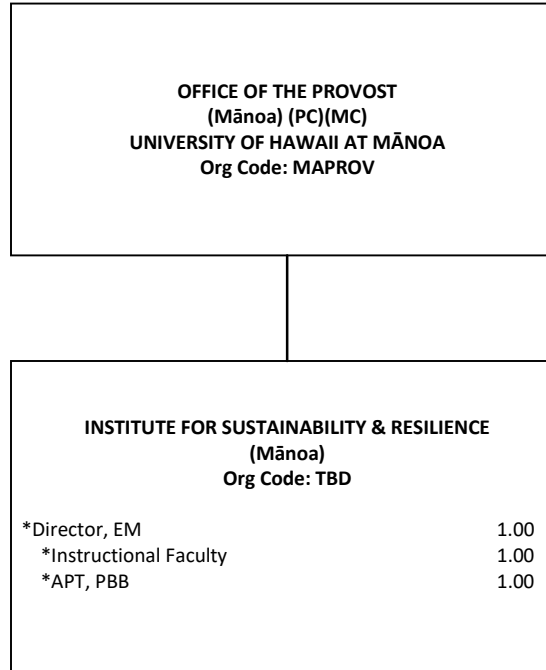
Date

STATE OF HAWAI'I  
UNIVERSITY OF HAWAI'I  
UNIVERSITY OF HAWAI'I AT MĀNOA  
OFFICE OF THE PROVOST  
**INSTITUTE FOR SUSTAINABILITY & RESILIENCE**

### ORGANIZATIONAL CHART

PC=President's Cabinet  
MC=Mānoa Cabinet

DEPARTMENT TOTAL	PERM
General Fund:	3.00



\*Positions to be established; Director, EM position to be classified.

CHART TOTAL	PERM
General Fund:	3.00

## PROPOSED

STATE OF HAWAI'I  
UNIVERSITY OF HAWAI'I  
UNIVERSITY OF HAWAI'I AT MĀNOA  
OFFICE OF THE PROVOST  
**INSTITUTE FOR SUSTAINABILITY & RESILIENCE**  
FUNCTIONAL STATEMENT

### INTRODUCTION

The Institute for Sustainability and Resilience (ISR) provides a campus-wide focus for interdisciplinary instruction, research, and outreach relating to sustainability and resilience. ISR serves as the coordinating body for sustainability and resilience-related activities across campus and provides UH Mānoa with representation and participation in systemwide sustainability and resilience activities and initiatives. The institute also provides a strong focus for competitive participation by the campus in large interdisciplinary global research initiatives and for philanthropic investment in sustainability and resilience at UH Mānoa. Through its work, ISR is committed to embracing the culture, wisdom, and fundamental values of the indigenous people of Hawai'i to advance sustainability across the educational, research, and service missions of the campus. ISR stewards the Interdisciplinary BA in Sustainability and Undergraduate Certificate in Sustainability.

### MAJOR FUNCTIONS

ISR is responsible for implementing Board of Regents Policy RP 4.208: Sustainability Policy, and Executive Policy 4.202: System Sustainability in the areas of instruction, research, and outreach as follows:

#### A. Curriculum

- Provides leadership and collaboration on the development of new courses and programs related to sustainability and resilience in and across UH Mānoa schools, colleges, and academic departments
- Collaborates with colleagues across the UH System to establish and maintain the articulation of sustainability-related courses and programs for transfer students.
- Offers instruction and academic advising leading to the Interdisciplinary BA in Sustainability, the Undergraduate Certificate in Sustainability, and sustainability-related combined degree pathway programs.
- Oversees the Sustainability Curriculum Committee and supports its work in the assessment of learning outcomes and program evaluation.
- Provides oversight of the "SUST" sustainability and resilience courses, including the cross-listing of sustainability and resilience-related courses with academic

## PROPOSED

departments and the creation of new SUST courses.

- Develops campus and community-based sites for laboratory or field-based learning related to sustainability, including engagement by students in the University's operational improvements in sustainability.
- Incorporates sustainability practices and learning into student life and other co-curricular activities.
- Develops and provides professional development opportunities for faculty related to curriculum development and delivery in sustainability.
- Represents UH Mānoa within the 10-campus Sustainability Curriculum Council, which works on issues of coordination and articulation between sustainability curriculum pathways among campuses.

### B. Research, Service & Outreach

- Establishes metrics via the Association for the Advancement for Sustainability in Higher Education (AASHE) Sustainability Tracking, Assessment, and Rating System (STARS) to measure and promote increased research and scholarship in sustainability at all levels.
- Supports professional development and collaboration opportunities for faculty and students in sustainability scholarship.
- Facilitates interdisciplinary research and scholarship related to sustainability and resilience.
- Collaborates with partners with academic and research units and community organizations to secure extramural grants and contracts that support the mission of ISR and UH Mānoa's kuleana in Hawai'i and the Pacific.
- Establishes mutually beneficial, reciprocal partnerships with community organizations, nonprofit organizations, the private sector, and higher education institutions to advance sustainability initiatives.
- Creates internship and service-learning opportunities for students with external partners and collaborators.
- Supports sustainability and related science education initiatives in Hawai'i's public schools.