



## Make The Most of Your Curriculum Map

Facilitated by the Assessment Office  
March 2011



### Who Are We?

- Assessment Office
  - Faculty managed
  - Mission: improve student learning through program assessment
  - Collaborate with faculty, staff, and administrators
  - Workshops, consultations, events, website



### What Are We Doing Today?

- Program Assessment Overview
- Curriculum Map Examples
- Ways to Use a Curriculum Map





## What Will You Leave Knowing?

1. Location of your program's curriculum map
2. At least two ways a curriculum map can be used

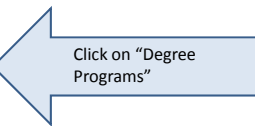


## Location of Degree Programs' Curriculum Maps

<http://manoa.hawaii.edu/assessment/>

On the sidebar:

Reports, Plans, SLOs  
Degree Programs



Select year 2010

Select a program and look at question # 3



## Why Do Program Assessment?

- Assessment is a tool that can guide program *planning, improvement and evolution*

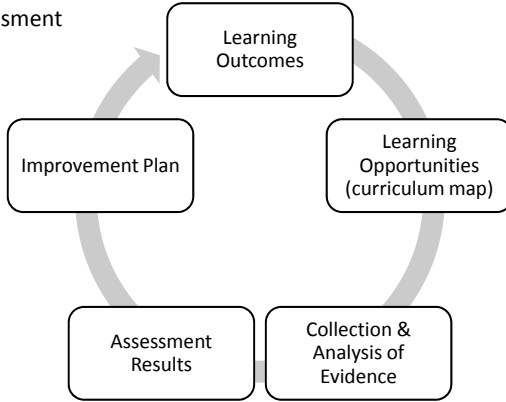
Program Assessment	≠	Individual Evaluation
--------------------	---	-----------------------





## Program Assessment Overview

Assessment  
Cycle



A graphical illustration of the relationship between a program's courses/requirements and the program's student learning outcomes.

## CURRICULUM MAP



Collaborate to create a  
cohesive curriculum





## Basic Curriculum Map

Student learning outcomes (SLOs)

PhD Requirements	SLO 1 Methods	SLO 2 Communication	SLO 3 Research	SLO 4 Professional Performance
Required Courses	X			
Qualifying Exam		X	X	
Comp. Exam	X	X		X
Dissertation	X	X	X	
Final Exam	X	X	X	X
Seminar Requirements		X		X



Learning opportunities

Learning opportunities are "mapped"

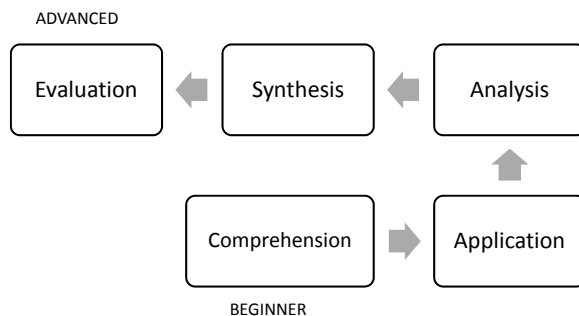
## Curriculum Map Excerpt: SLOs from Intro to Mastery

Requirements	SLO 1	SLO 2	SLO 3
CRS 301	I	I	I
CRS 302	R		R
CRS 430		R	R
CRS 480	M & A	R	
CRS 490		M & A	M & A
Exit interview	A	A	A

I=Introduced  
 R=Reinforced/Practiced  
 M=Mastered (at the exit or senior level)  
 A=Assessed for program assessment

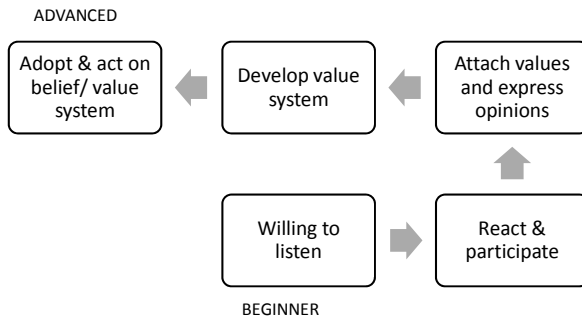


## Cognitive Domain (Bloom et al.)





## Affective Domain (Bloom et al.)



## Curriculum Map Excerpt: Based on Bloom et al.'s Cognitive Domain

Requirements	SLO 1	SLO 2	SLO 3
CRS 301	Know	Know	Know
CRS 302	Apply		Apply
CRS 430		Apply	Apply
CRS 480	Create & Evaluate	Create	
CRS 490		Create & Evaluate	Create & Evaluate
Exit interview	Create & Evaluate	Create & Evaluate	Create & Evaluate



## Curriculum Map Excerpt: "Key" or "Signature" Assignments

Requirements	SLO 2	SLO3
CRS 301	-Annotated Bibliography -Literature Review	
CRS 480	-Literature Review -Research Proposal	-Oral Presentation
CRS 490 (capstone)	-Research Proposal -Research Report	-Oral Presentation





## Dept. Course Scheduling

- Travel Industry Management Curriculum Map



## Recap

- Curriculum cohesiveness
- Syllabus & course goals
- Assignments
- Evidence for program assessment
- Dept. course offerings



## Your Turn

Please write down:

1. What was the most important thing you learned in today's workshop?
2. How could your program make the most of a curriculum map?
3. What unanswered questions do you have?





## Let's Hear Your Questions

### April Workshops

- ❖ **Focus Group, Interview, or Survey: Which is Right for Your Academic Program?** (Thurs, 4/21, 1:30)
- ❖ **Increasing Faculty Involvement in Program Assessment** (Tues, 4/26, 1:30)



## Workshop Evaluation Time!



## Thank You for Your Time

### Assessment Office

airo@hawaii.edu

<http://manoa.hawaii.edu/assessment>

**Marlene Lowe**, 956-4283

mplowe@hawaii.edu

**Monica Stitt-Bergh**, 956-6669

bergh@hawaii.edu

